



OrderDog Mobile

Quick Setup Guide

What's in My Box?

The following items are included in your kit package:



OrderDog Mobile Computer ready for plug and play. Mobile app installed and configured for your Store.

Look for your Username and Password in the device box.

Mobile Charging

- USB-C to USB-A 1M Charging Cable
- Power Supply Wall Adapter

Battery

(Installed in Mobile device)

Save this box and packaging material for future use in case you need to store or ship the mobile computer.

Accessories Included



Charge Only Cradle



Soft Belt Holster
(Trigger or Handheld)



Snap-on Trigger
w/ Wrist Lanyard



Hand Strap
(Handheld Operating)

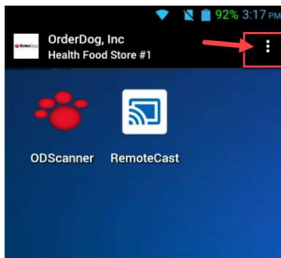
Getting Started:

1. Turn on OrderDog Mobile device

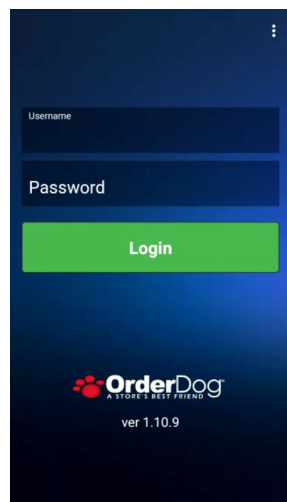


Turns the display on and off. Press and hold to reset the device or power off.

2. Setup Wi-Fi



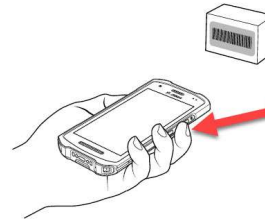
3. Start OrderDog Mobile app and Log in



Look for your Username and Password in the device box.

Using the OrderDog Mobile:

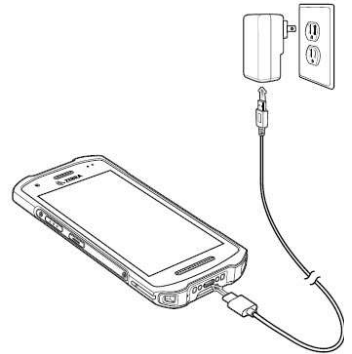
Scanning Barcodes:



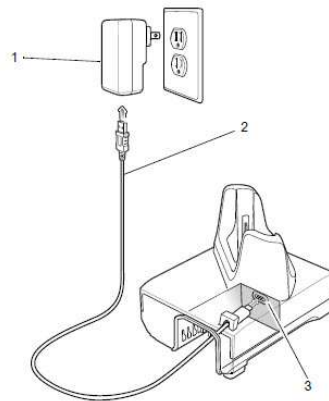
Press and hold the scan button. The red laser aiming pattern turns on to assist in aiming.

Charging with Charging Cable:

1. Connect the USB cable to the device.
2. Connect the USB cable to the power supply.



Charging with Charging Cradle:



1. Connect the USB cable to the cradle.
2. Connect the USB cable to the power supply.

3. Insert the device into the slot to begin charging.
4. Ensure the device is seated properly.

